

Endeavour Foundation Service Advisory Groups



Endeavour Foundation Service Advisory Groups



This is a document from Endeavour Foundation.

When you see the words we or us it means Endeavour Foundation.

Bold
Not bold

We have put hard words in **bold**.

This means the letters are thicker and darker.

We tell you what these words mean in the word list on the last pages of this document.



This document is about the Endeavour Foundation **Service Advisory Groups**.



Service Advisory Groups give feedback and advice to our **Executive Leadership Team** on our services and future direction.

This document tells you how things work in the Service Advisory Groups.

This includes:



- who volunteers for a Service Advisory Group.
- What Service Advisory Group volunteers do.
- What the Home and Community Service Advisory Group does.
- What the Disability Employment Service Advisory Group does.
- How people we support are rewarded as Service Advisory Group volunteers.
- the support available for Service Advisory Group volunteers
- How to tell us if you want to volunteer for a Service Advisory Group.

Who can volunteer for a Service Advisory Group

15



There are about 15 volunteers in each Service Advisory Group



Service Advisory Group volunteers are from all across Australia.

They are people who have experience of the NDIS for example:



- people we support



- family members of people we support



- **Advocates** of people with intellectual disability that are part of an Advocacy organisation.



- **Researchers** who work for inclusion of people with intellectual disability.



- **Professional people** who provide services to people with intellectual disability e.g. health professionals or disability employment specialists.

What Service Advisory Group Volunteers do



The role of a Service Advisory Group volunteer is to:

- attend about four online meetings each year.
- prepare for meetings by reading accessible meeting documents



Attending the meetings and reading the meeting documents will take about four to six hours for each meeting.



At the meetings volunteers give feedback based on their unique experiences on:



- ideas for our services now and in the future to make them better for people we support.



- how safe and useful are our services.



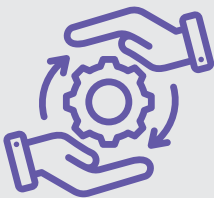
- our **strategic plan**.



- how we speak up for people with intellectual disability.

What the Home and Community Service Advisory Group does

The Home and Community Service Advisory Group gives feedback and advice about:



- Supported Independent Living options

- community access and engagement

- current and future services

- our **strategic plan**

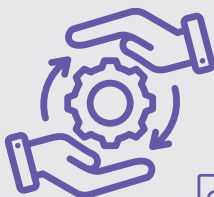
- preparing for future needs and disability sector changes

- elevating the voices of people we support and advocacy efforts.

What the Disability Employment Service Advisory Group does

The Disability Employment Service Advisory Group gives feedback and advice about:

- the variety of our disability employment services including social enterprises
- partnerships with organisations to **advocate** for open employment opportunities.
- supporting individuals to identify their own employment options
- how we can help more people find a paid job that is right for them.
- current and future services
- our strategic plan
- preparing for future needs and disability sector changes
- elevating the voices of people we support and advocacy efforts.



Support for Service Advisory Group volunteers



Service Advisory Group volunteers are asked if they require support to participate in a Group.



We talk with people to learn how we can best support them.



Meeting documents will be provided in an accessible format.



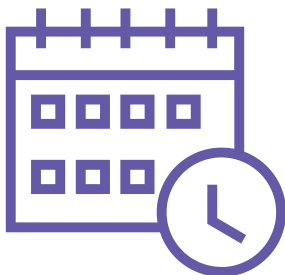
Support people can come to meetings to help the volunteer participate.



We will listen to everyone's ideas and feedback.



A member of the Endeavour Foundation Executive Leadership Team will Chair and run the meetings.



We may have extra meetings if needed.

We will tell you about them in advance.



People we support who volunteer to participate in a Service Advisory Group will be given gift cards for attending meetings.



This is to thank people we support for their time and effort.

How to tell us if you want to volunteer for a Service Advisory Group



If you are interested in volunteering for a Service Advisory Group please complete this [Easy Read Advisory Group Expression of Interest form](#).



People tick a box on the form to tell us if they want to volunteer for the:

Home and Community Service Advisory Group

OR



Disability Employment Service Advisory Group.

Any questions?



If you have any questions, please email:
clientadvisorycommunication@endeavour.com.au.

Word List

Service Advisory Group



Service Advisory Groups give feedback and advice to our Executive Leadership Team on our services and future direction.

Executive Leadership Team



The Executive Leadership Team are a team of people who manage Endeavour Foundation. You can read more about them on our website by clicking on the link below:

<https://www.endeavour.com.au/about-us/who-we-are/executive-leadership-team>

Advocates



An Advocate is a person who publicly supports other people who want assistance to represent themselves about an issue that impacts them.

Researchers



A Researcher is a person who does academic research to help solve a problem or make things better.

Word List

Professional people



In this document we are talking about people who work in a health or administration profession and support people with services through the NDIS for example:

- Psychologists
- Occupational Therapists
- Disability Employment specialists

Strategic Plan



Our strategic plan guides us in our purpose of making possibilities a reality for people we support.

You can learn more about our Strategic Plan in the Strategic Plan Easy Read and video by visiting our website using the link below:

<https://www.endeavour.com.au/about-us/who-we-are/our-strategic-plan>