

Supported Independent Living (SIL) in Arundel, Gold Coast



Vacancy details

Suburb	Arundel, Gold Coast
Available bedrooms	1
Number of other residents	3
Disability support	Group Support Model
Accessibility	Fully Accessible

Is this the right home for you?

This home is the perfect fit for a male housemate who values friendship and shared interests.

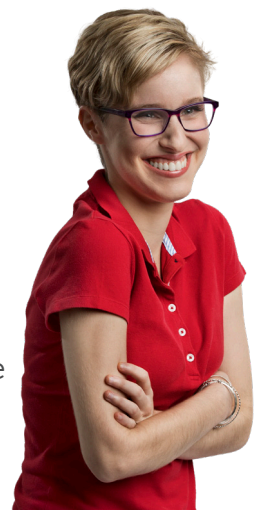
- Community access: Explore your community with friends.
- Culinary adventures: Join in on cooking sessions and cook delicious meals.
- Unleash your creativity: Discover your artistic talents through creative projects.

- Engage in stimulating conversations: Build lasting friendships with your housemates.

The lifestyle

With the beach at your doorstep, and a thriving community, you'll be living the Gold Coast dream. Whether you crave some alone time on your own personal patio or you're in the mood for some company, this home and location has it all.

- Convenient access: Public transport, shopping centres, medical facilities, restaurants, and cafes are within easy reach.
- Endless entertainment: Gold Coast theme parks are a short drive away.
- Nature at your doorstep: You're only a short drive from world-famous beaches and parks.



Funding - To apply for this vacancy, you will need funding for Supported Independent Living (SIL) in your NDIS plan. Talk to us today and we can help guide you through the NDIS process.



Contact us to arrange a tour.

Visit endeavour.com.au/arundel
or call 1800 112 112

NDVR
Endeavour Foundation